

MONTHLY MEMBERSHIP PROGRESS REPORT

District 321B1

Results as of: 10/31/2023

GMT:

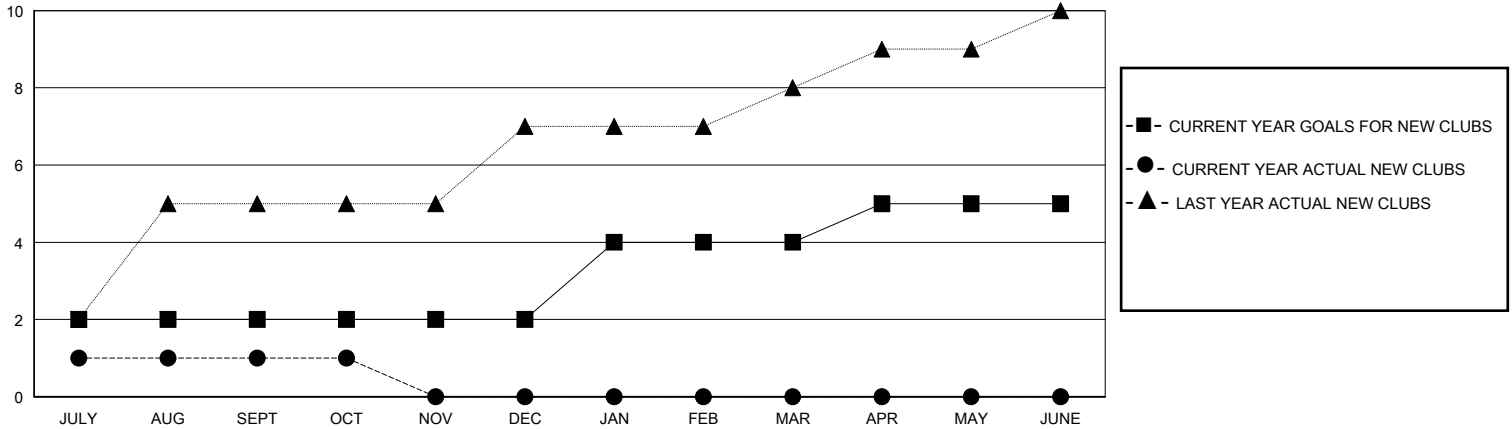
LOCATION INDIA

GMT CA

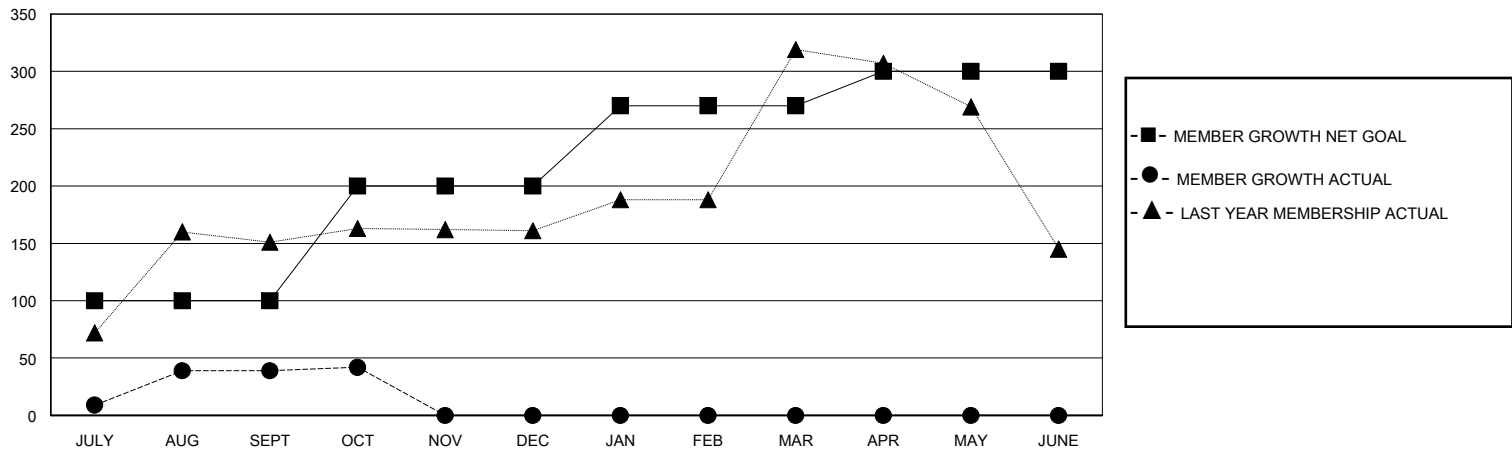
Clubs			
RESULTS FOR 2023-2024			
QUARTER	NEW CLUB GOAL	NEW CLUBS	DROPPED CLUBS
JULY/AUG/SEPT	2	1	0
OCT/NOV/DEC	0	0	0
JAN/FEB/MAR	2	0	0
APR/MAY/JUNE	1	0	0

Members			
RESULTS FOR 2023-2024			
QUARTER	MEMBER GROWTH NET GOAL	MEMBER GROWTH ACTUAL	DROPPED MEMBERS ACTUAL (including transfers)
JULY/AUG/SEPT	100	104	59
OCT/NOV/DEC	100	5	1
JAN/FEB/MAR	70	0	0
APR/MAY/JUNE	30	0	0

GOALS AND ACTUAL NEW CLUBS CUMULATIVE



GOALS AND ACTUAL MEMBERS CUMULATIVE



DROPPED CLUBS: 0	30 CLUBS OF 104 ADDED 1 OR MORE NEW MEMBERS	GENDER DISTRIBUTION
		MALE 1,633 (56.33%)
		FEMALE 1,258 (43.39%)
DROPPED MEMBERS	CLICK HERE FOR CUMULATIVE MEMBERSHIP DATA	TOTAL FAMILY UNIT MEMBERS 1,920
DECEASED 3		FAMILY MEMBERS PAYING HALF DUES 1,088
CLUB CANCELLED 0		
OTHER 57		
TOTAL 60		